

# **Value Chain** *Efficiency*

**Wheels India Perspective**

**T.A.B.BARATHI**  
Vice President (SCM)  
Wheels India Ltd

## Expectations from Customer



Quality

- Consistency
- Repeatability
- Defect free
- Performance

## Expectations from Customers

Cost

- Cheap ??
- Optimal
- Affordable
- Value based



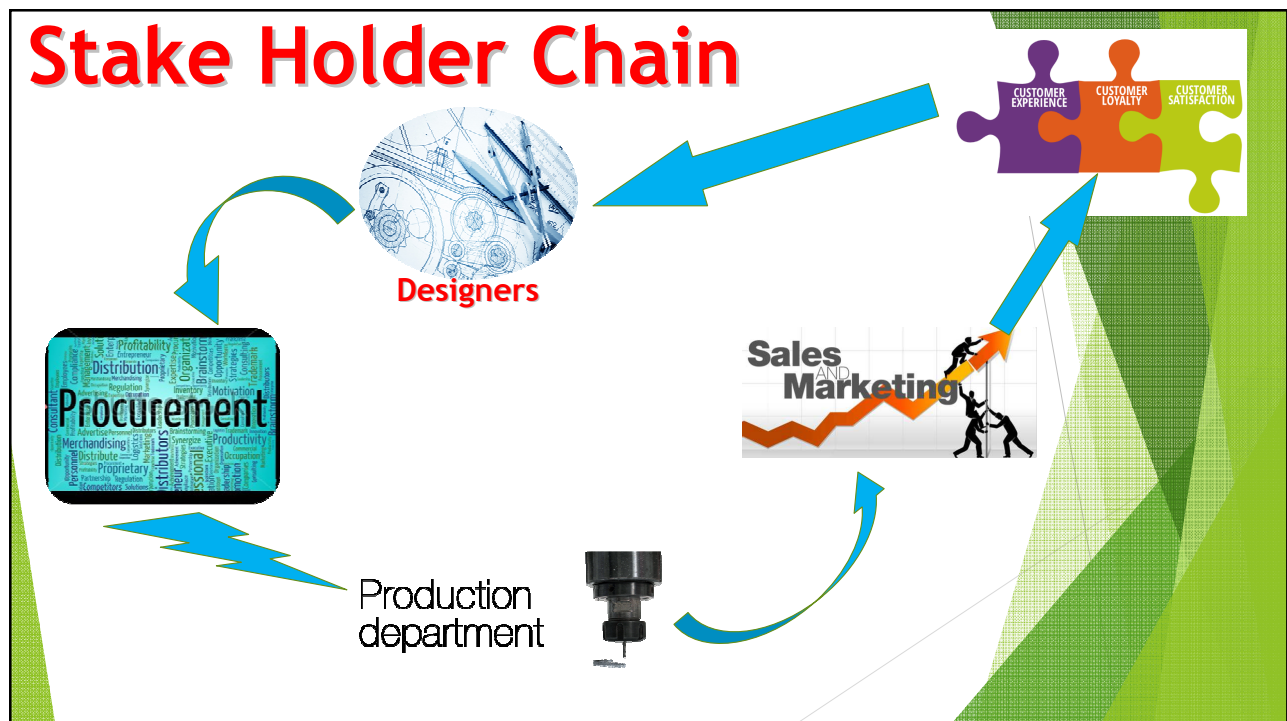
## Expectations from Customers

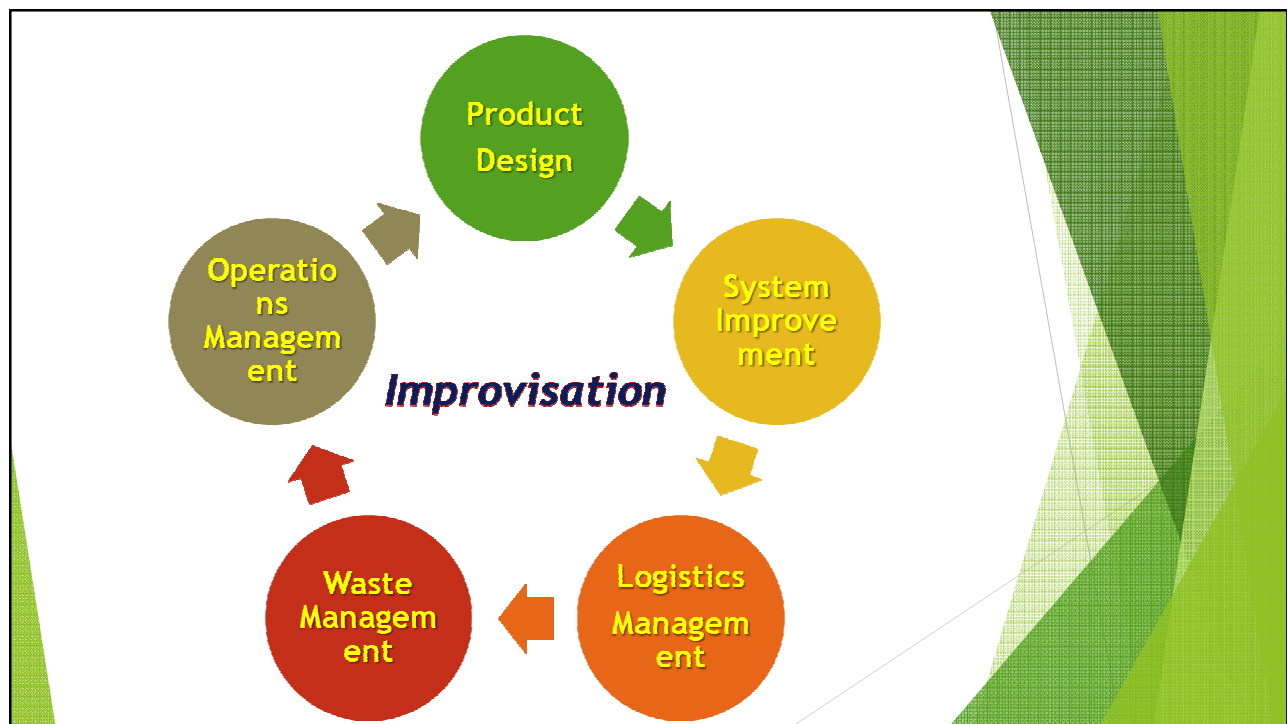
### Delivery

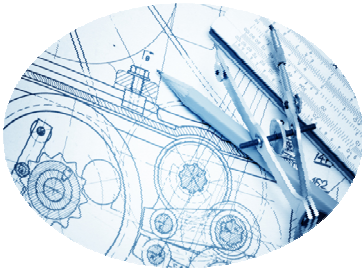
- On time
- Intended Qty
- Lead time reduction



# Stake Holder Chain







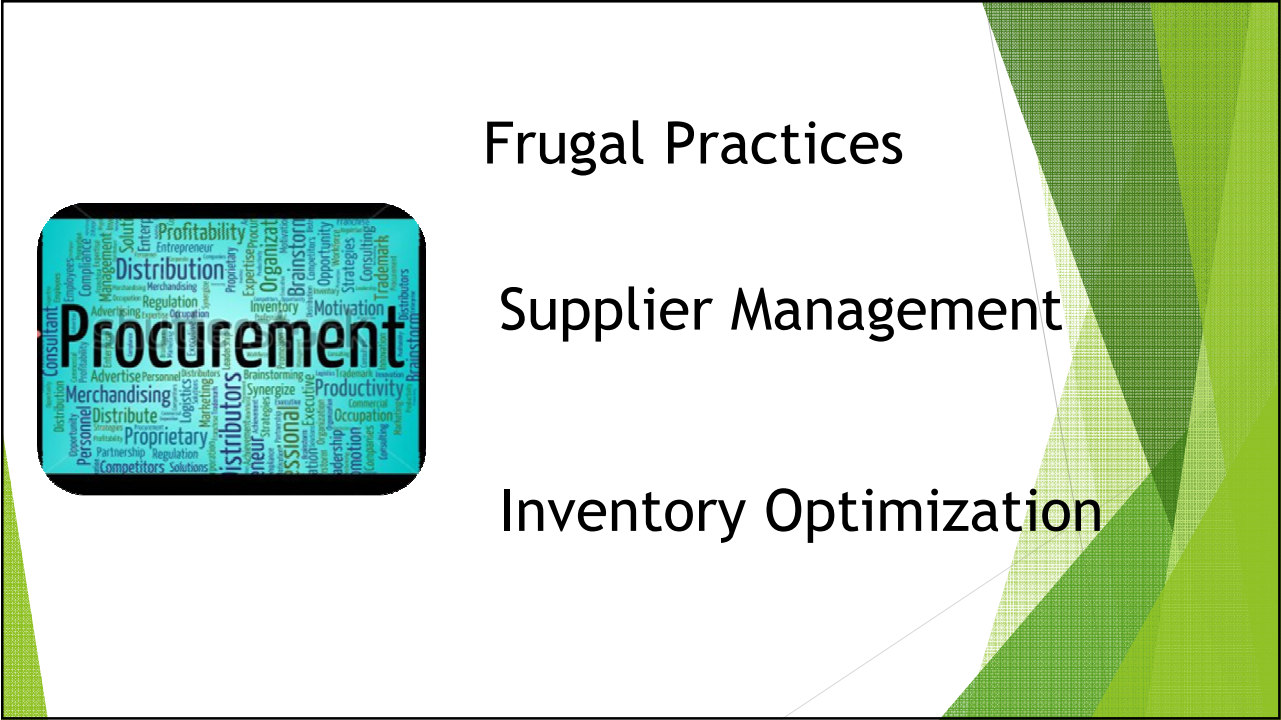
**Designers**



Standardization

Customization

Value Engineering

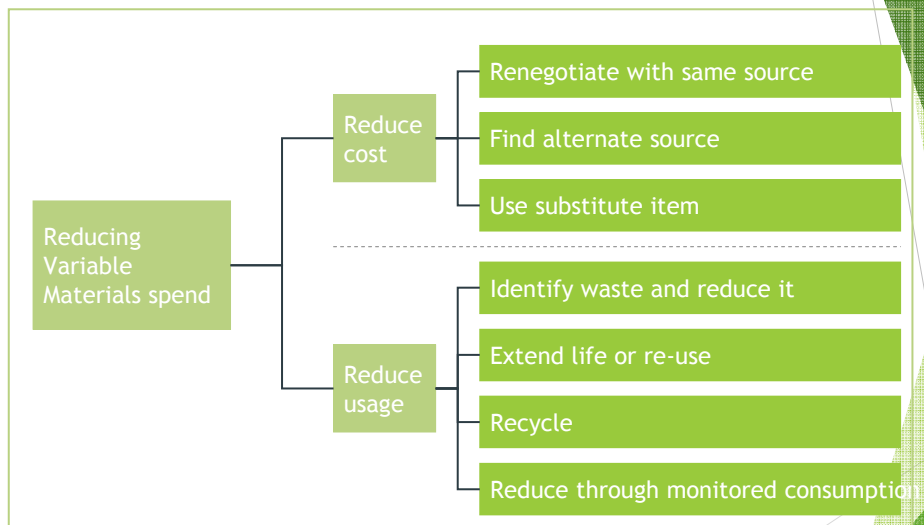


# Supplier Management

# Inventory Optimization



## Levers for frugal practice



Production  
department

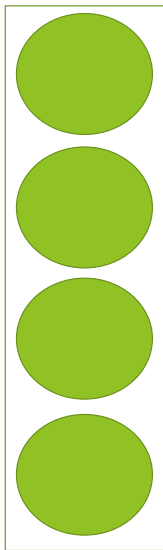


Waste Elimination

Yield Improvement

Innovative Processes

## Case of Yield Improvement



Skeleton has been removed by re designing & re calculating Requirements, by an Octagonal blank

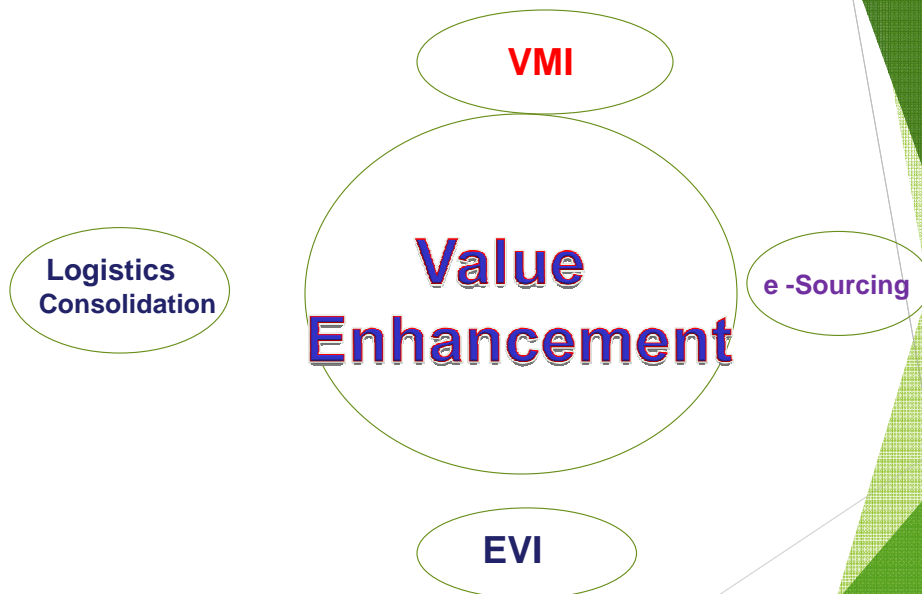


Accuracy of forecast

Logistics Management

Knowledge Transfer

## **Initiatives in value Enhancement**





**Energy Efficient**

**New Technologies**

**Environment  
Friendly**

# Cost-effectiveness

- ▶ Cost of Production
- ▶ Equipment and resources
- ▶ Maintenance expenses
- ▶ Packing materials and other consumables
- ▶ Service charges
- ▶ Obsolete parts/products



# Resource utilisation

- ▶ warehouse facilities
- ▶ storage facilities
- ▶ handling facilities
- ▶ manpower
- ▶ resources lost due to breakdown of equipment and facilities

## CAPACITY UTILIZATION RATE



MACHINE



COMPANY



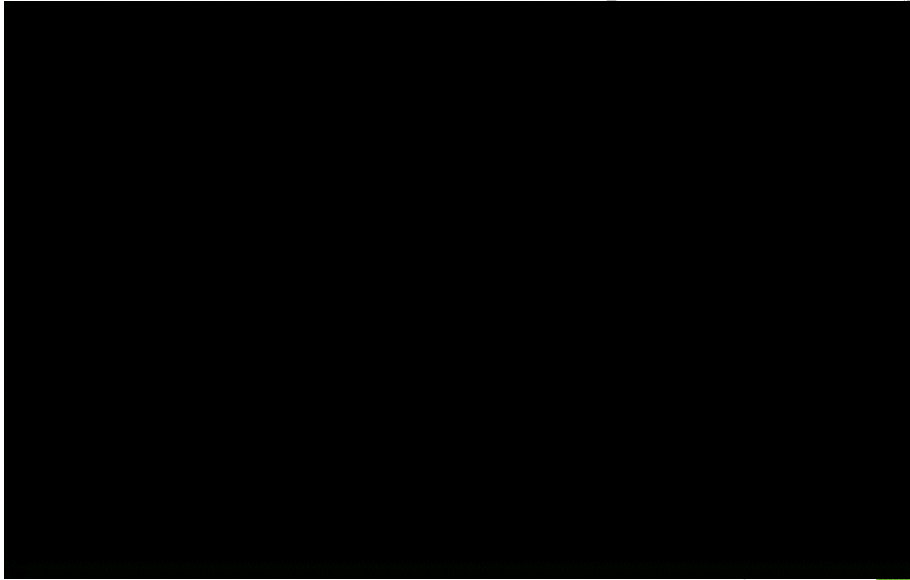
INDUSTRY



ECONOMY



# Innovation to Help Society



**Thank you**